

N.E. 1/4
SECTION 16, T.6N., R.2E., S.L.B. & M.

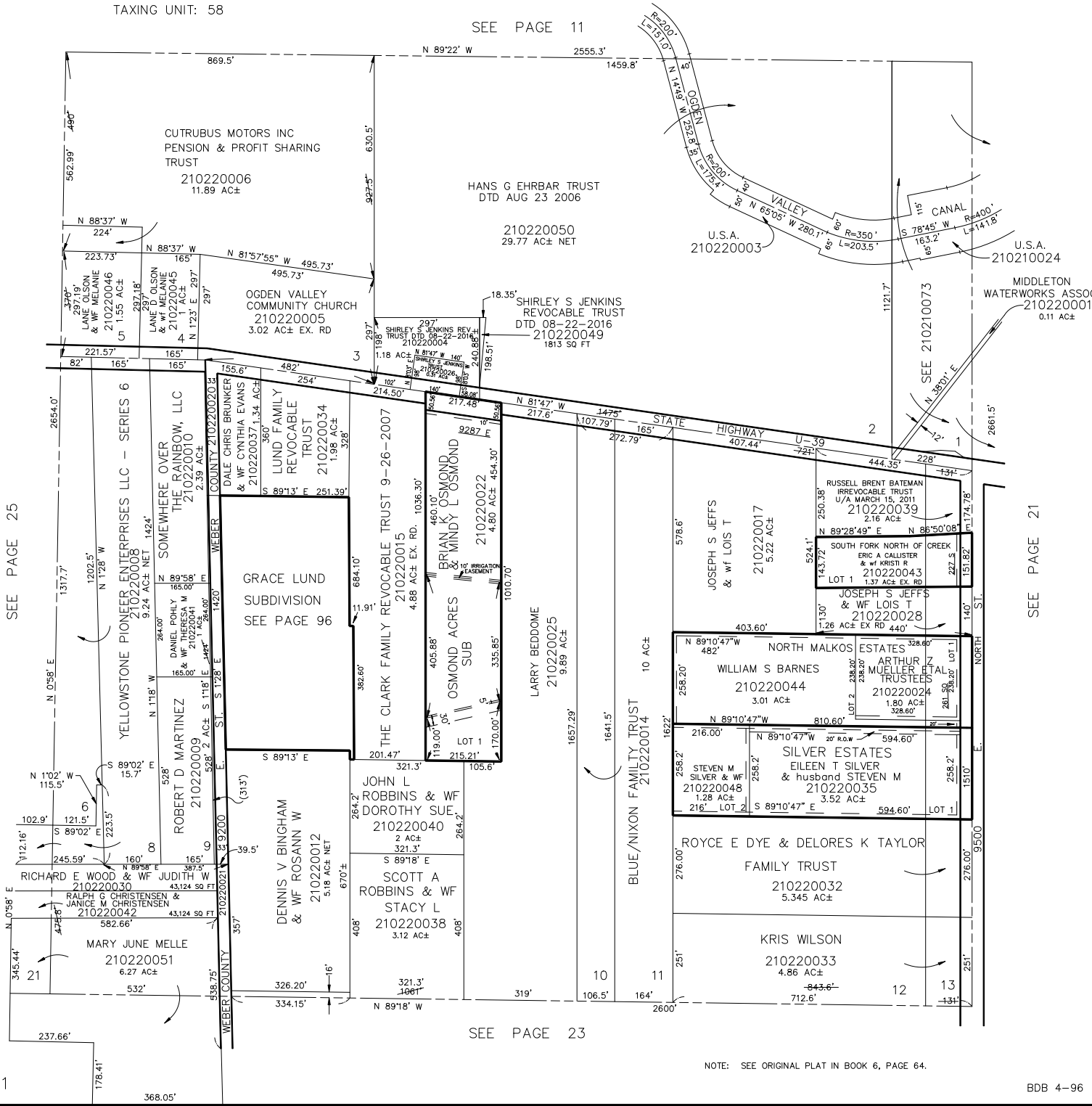
IN WEBER COUNTY
SCALE 1" = 200'

TAXING UNIT: 58

SEE PAGE 11

SEE PAGE 25

SEE PAGE 21



SEE PAGE 23

NOTE: SEE ORIGINAL PLAT IN BOOK 6, PAGE 64.